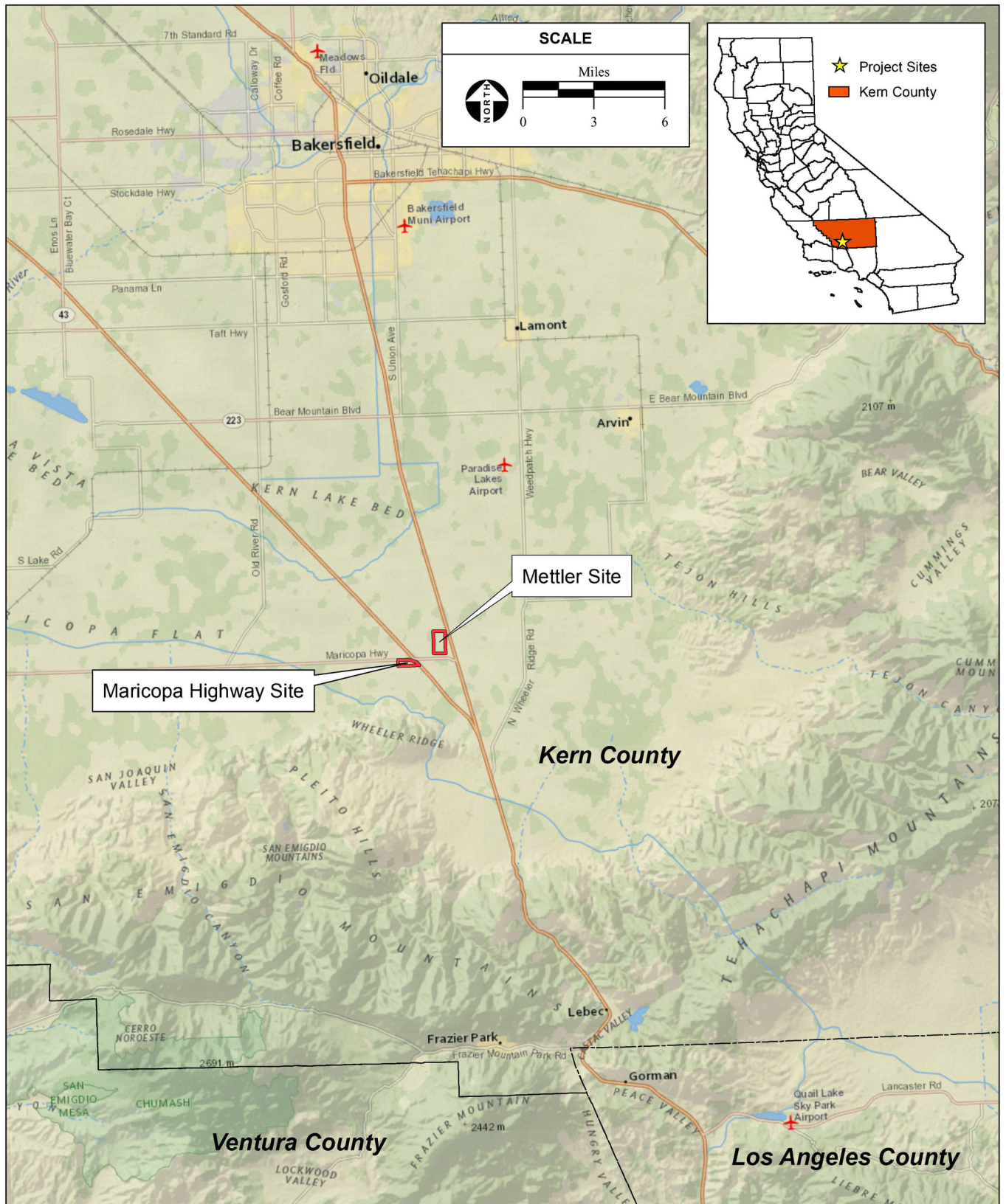


# ***APPENDIX E***

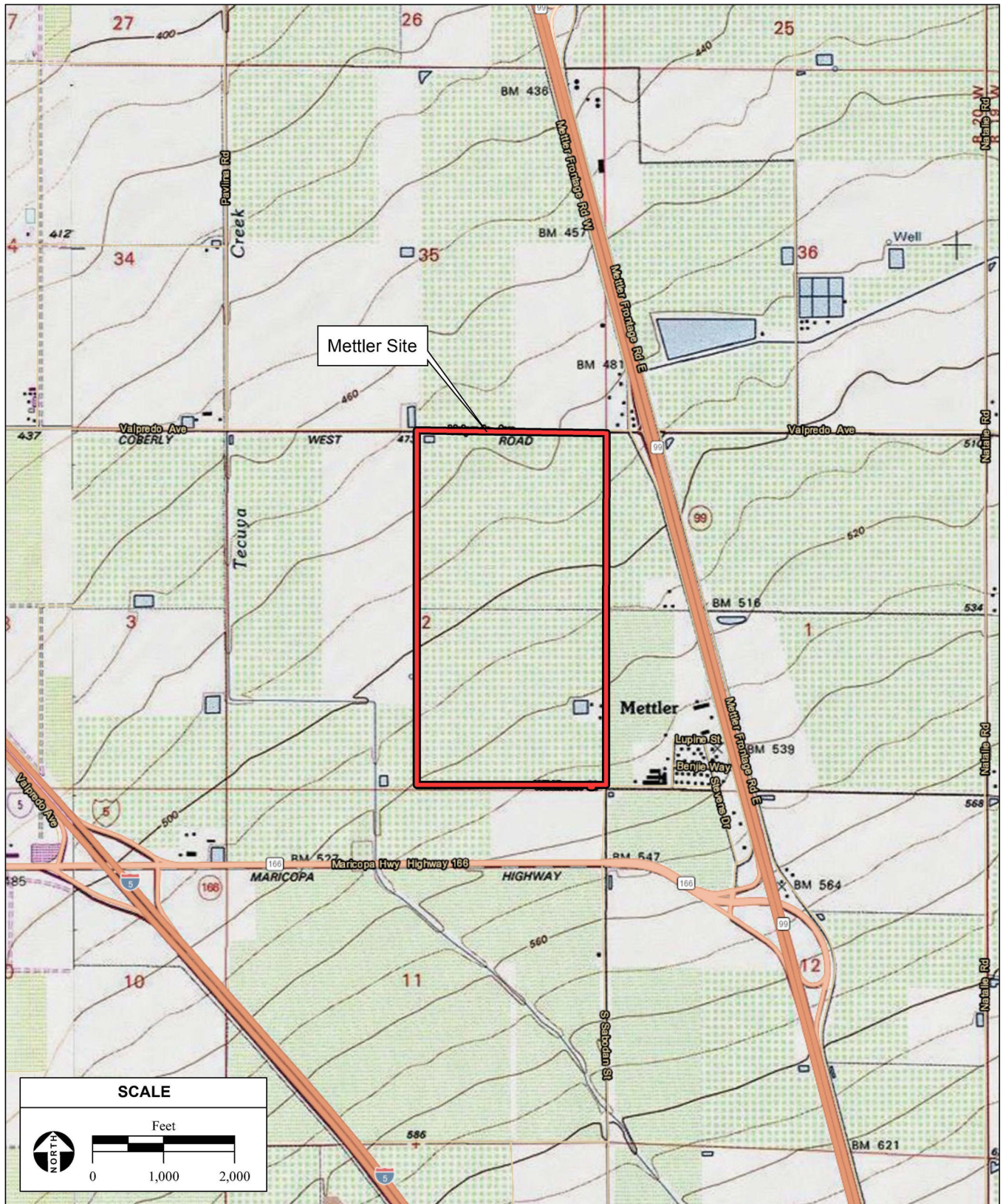
---

## ***FIGURES***



**Figure 2-1**  
Regional Location





SOURCE: "Mettler, CA" USGS 7.5 Minute Topographic Quadrangle, T11N, R20W, Section 2, San Bernardino Baseline & Meridian; ESRI Data, 2013; AES, 4/16/2019

Tejon Indian Tribe Trust Acquisition and Casino EIS / 215514 ■

**Figure 2-2**  
Mettler Site and Vicinity



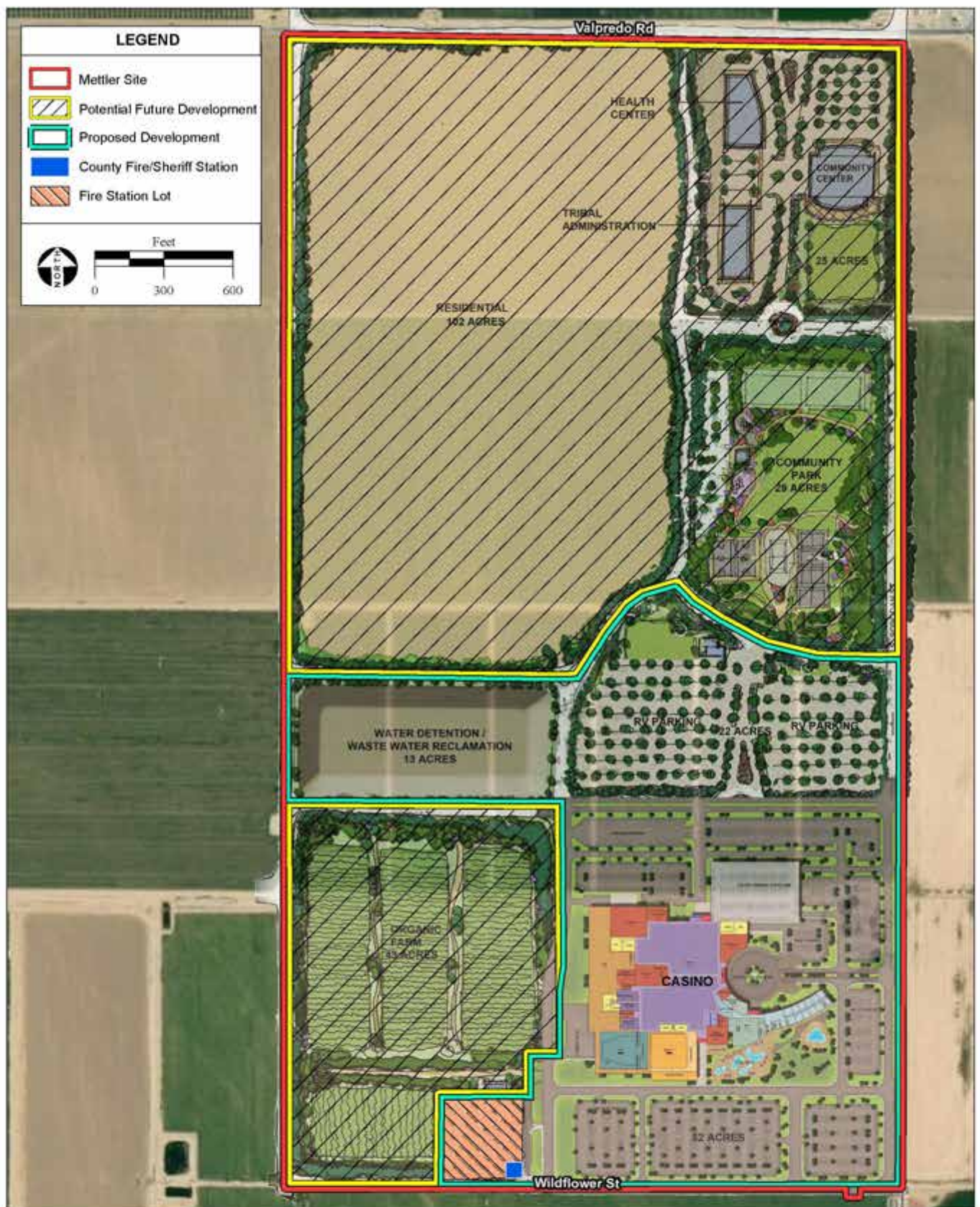


SOURCE: Kern County, 2016; DigitalGlobe aerial photograph, 7/1/2018;  
AES, 8/14/2019

Tejon Indian Tribe Trust Acquisition and Casino EIS / 215514 ■

**Figure 2-3**  
Mettler Site Parcel Map





SOURCE: Friedmutter Group, 11/2018; DigitalGlobe aerial photograph, 11/1/2017; AES, 8/14/2019

Tejon Indian Tribe Trust Acquisition and Casino EIS / 215514 ■

**Figure 2-4**  
Alternative A1 and Potential Future Development Site Plan





SOURCE: Friedmutter Group, 11/26/2018; AES, 8/14/2019

Tejon Indian Tribe Trust Acquisition and Casino EIS / 215514 ■

**Figure 2-5**  
Alternative A1 - Casino Site Plan

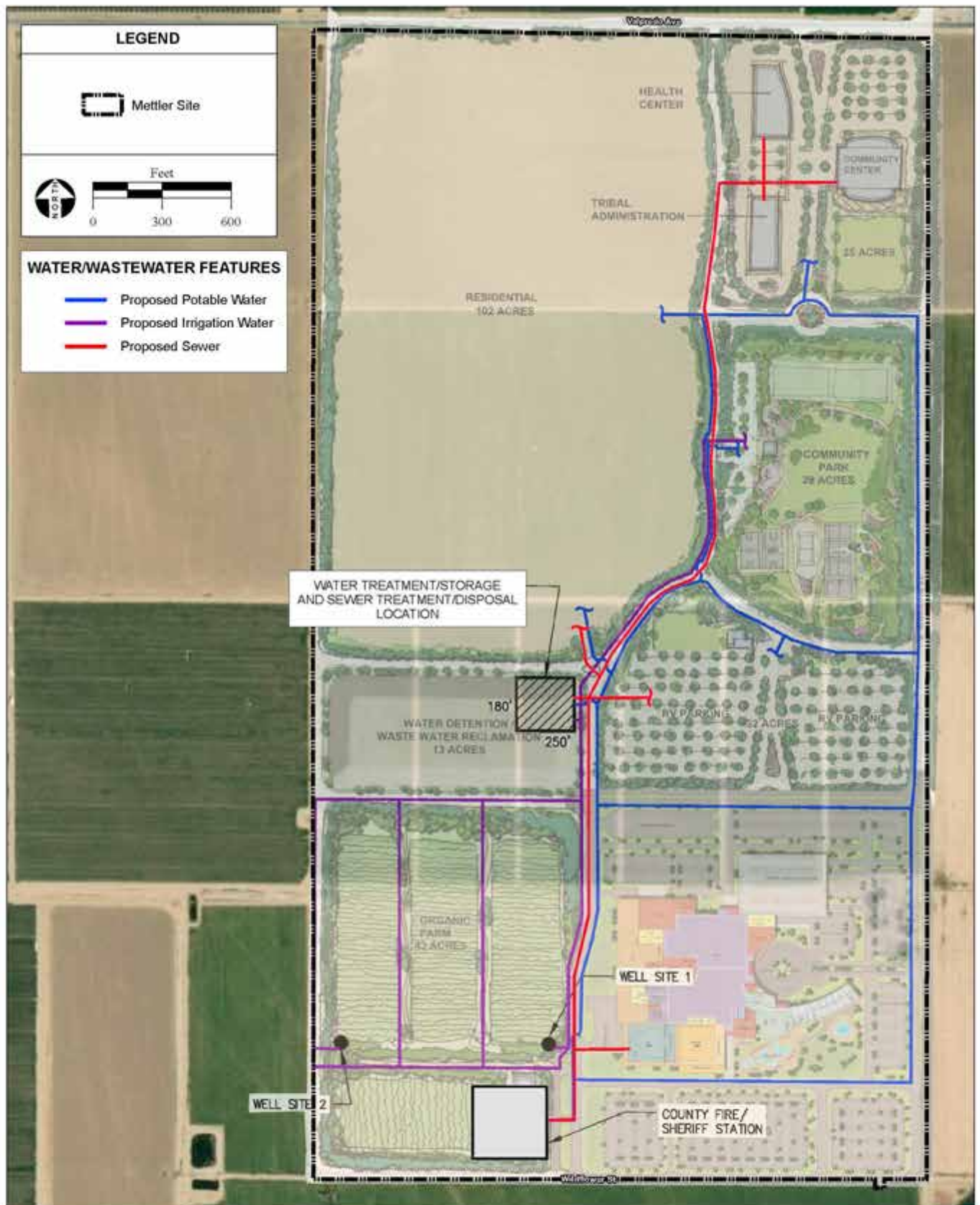




SOURCE: Friedmutter Group 1/2019, AES, 8/14/2019

Tejon Indian Tribe Trust Acquisition and Casino EIS / 215514 ■

**Figure 2-6**  
Architectural Rendering - Alternatives A1, A2, and B



SOURCE: Dexter Wilson Engineering, 5-23-2019; DigitalGlobe aerial photograph, 11/1/2017; AES, 1/23/2020

Tejon Indian Tribe Trust Acquisition and Casino EIS / 215514 ■

**Figure 2-7**  
Alternative A1 + Cumulative Buildout - Water/Wastewater Facilities





SOURCE: Friedmutter Group, 11/2018; DigitalGlobe aerial photograph, 11/1/2017; AES, 8/14/2019

Tejon Indian Tribe Trust Acquisition and Casino EIS / 215514 ■

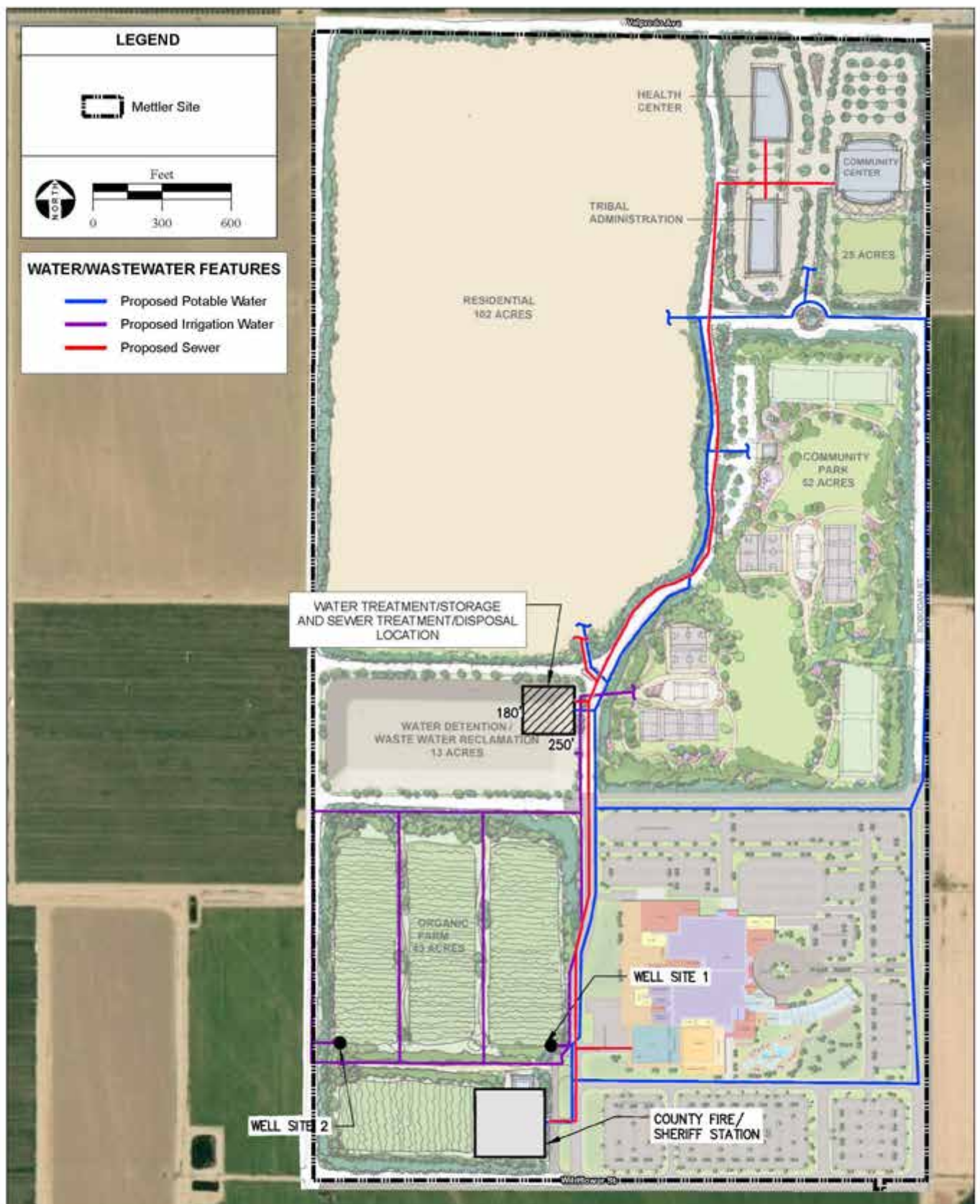
**Figure 2-8**  
Alternative A2 and Potential Future Development Site Plan





**Figure 2-9**  
Alternative A2 - Casino Site Plan

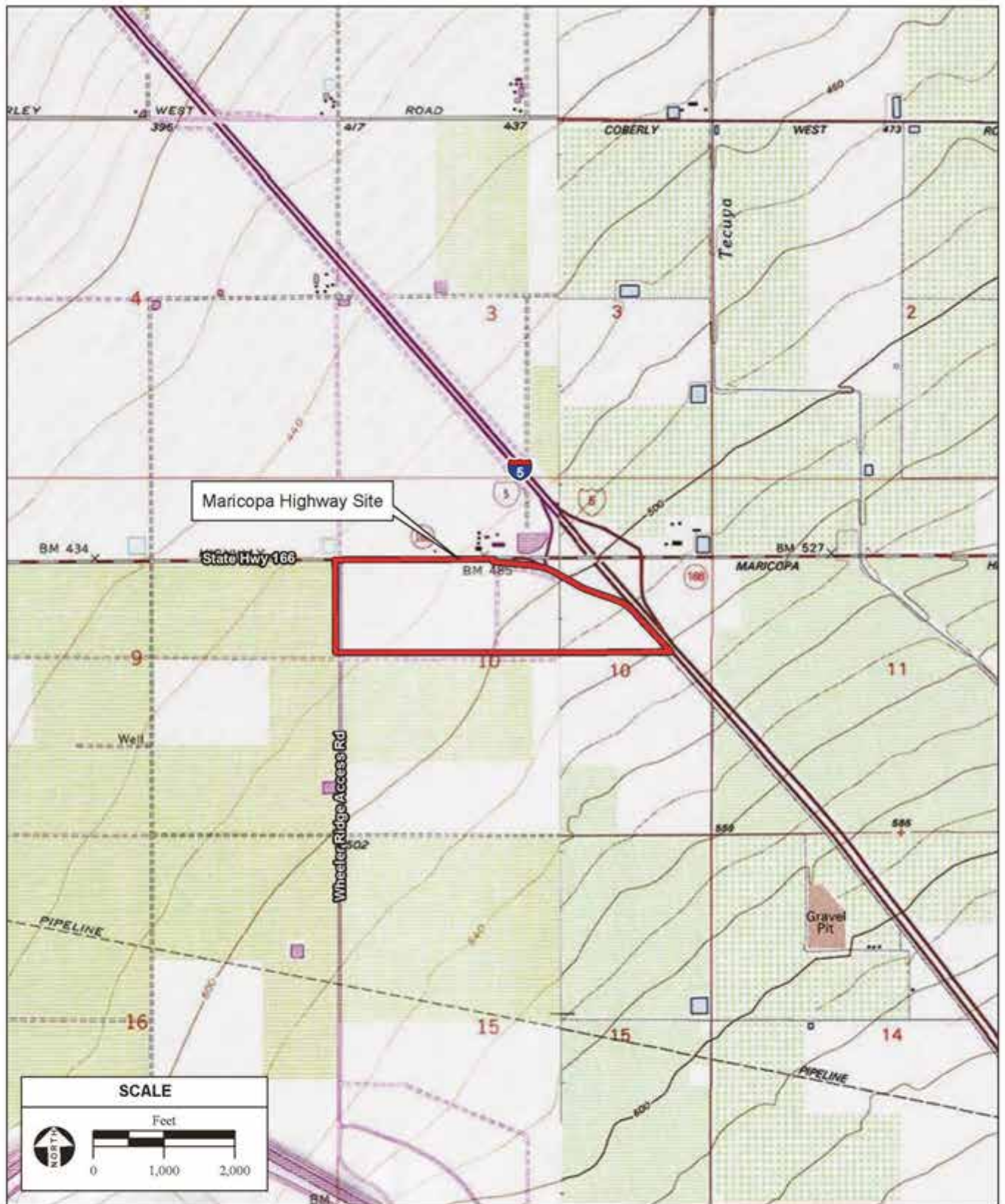




SOURCE: Dexter Wilson Engineering, 5-23-2019; DigitalGlobe aerial photograph, 11/1/2017; AES, 8/14/2019

Tejon Indian Tribe Trust Acquisition and Casino EIS / 215514 ■

**Figure 2-10**  
Alternative A2 + Cumulative Buildout - Water/Wastewater Facilities



SOURCE: "Coal Oil Canyon, CA" & "Mettler, CA" USGS 7.5 Minute Topographic  
Quadrangles, T11N R20W, Section 10, San Bernardino Baseline & Meridian,  
Kern County GIS, 2017; ESRI, 2018; ABS, 8/15/2019

Tejon Indian Tribe Trust Acquisition and Casino EIS / 215514 ■

**Figure 2-11**  
Maricopa Highway Site and Vicinity



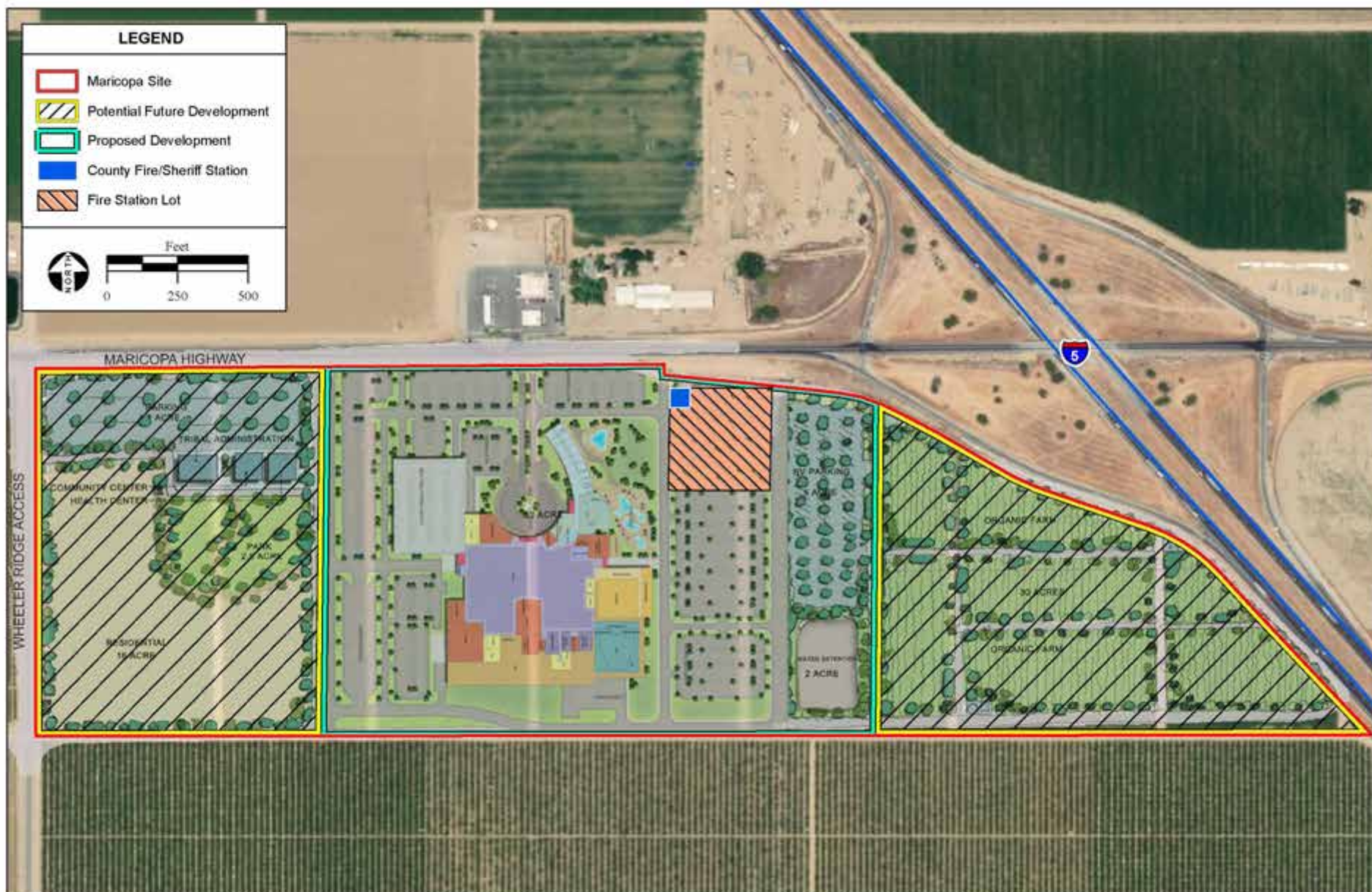


SOURCE: Friedmutter Group, 11/2018; DigitalGlobe aerial photograph, 11/1/2017, AES, 8/15/2019

Tejon Indian Tribe Trust Acquisition and Casino EIS / 215514 ■

**Figure 2-12**  
Maricopa Highway Site Parcel Map





SOURCE: Friedmutter Group, 11/2018; DigitalGlobe aerial photograph, 11/1/2017; AES, 8/14/2019

Tejon Indian Tribe Trust Acquisition and Casino EIS / 215514 ■

**Figure 2-13**  
Alternative B and Potential Future Development Site Plan

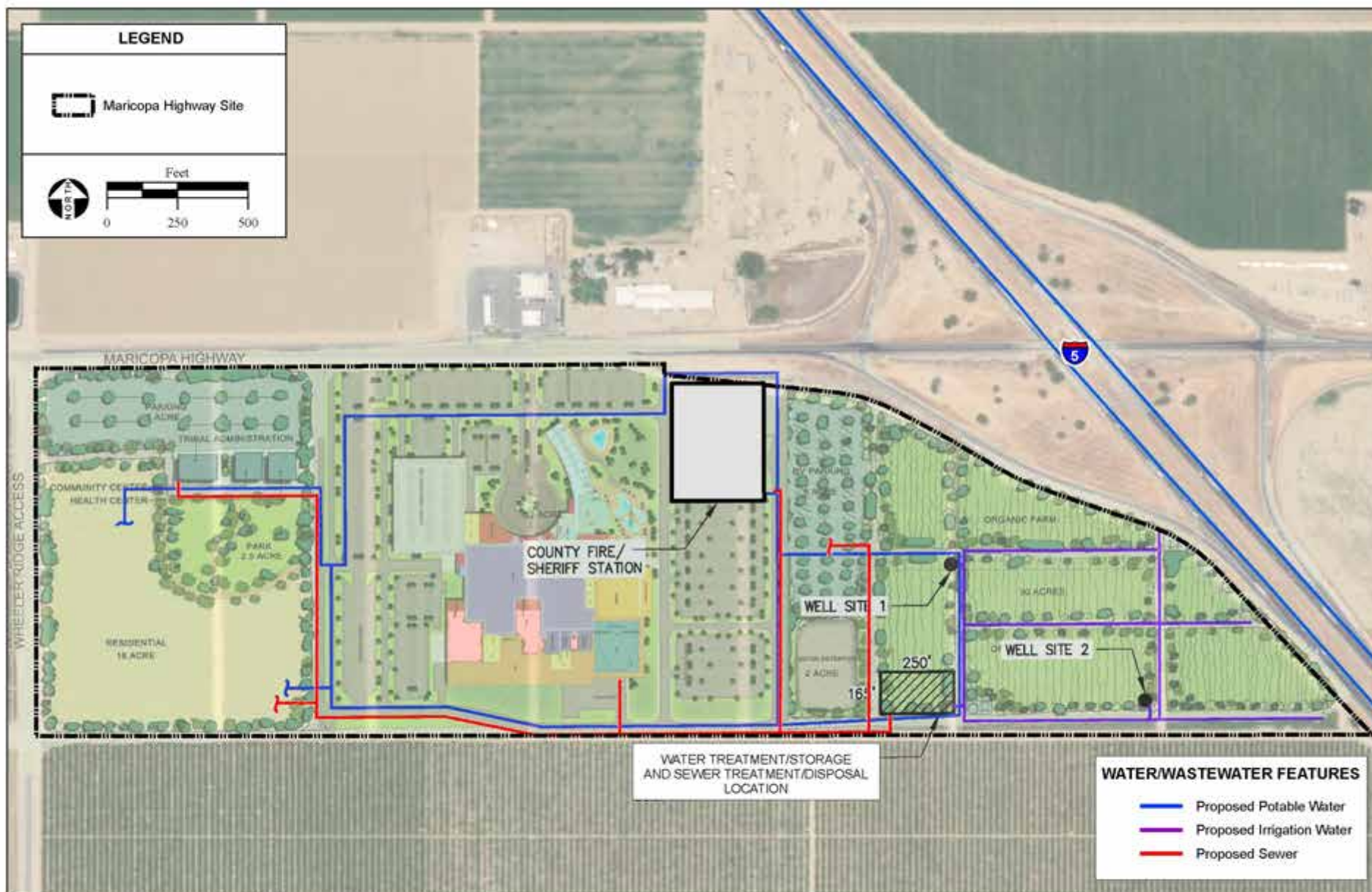




SOURCE: Friedmutter Group, 11/26/2018; AES, 8/14/2019

Tejon Indian Tribe Trust Acquisition and Casino EIS / 215514 ■

**Figure 2-14**  
Alternative B - Casino Site Plan



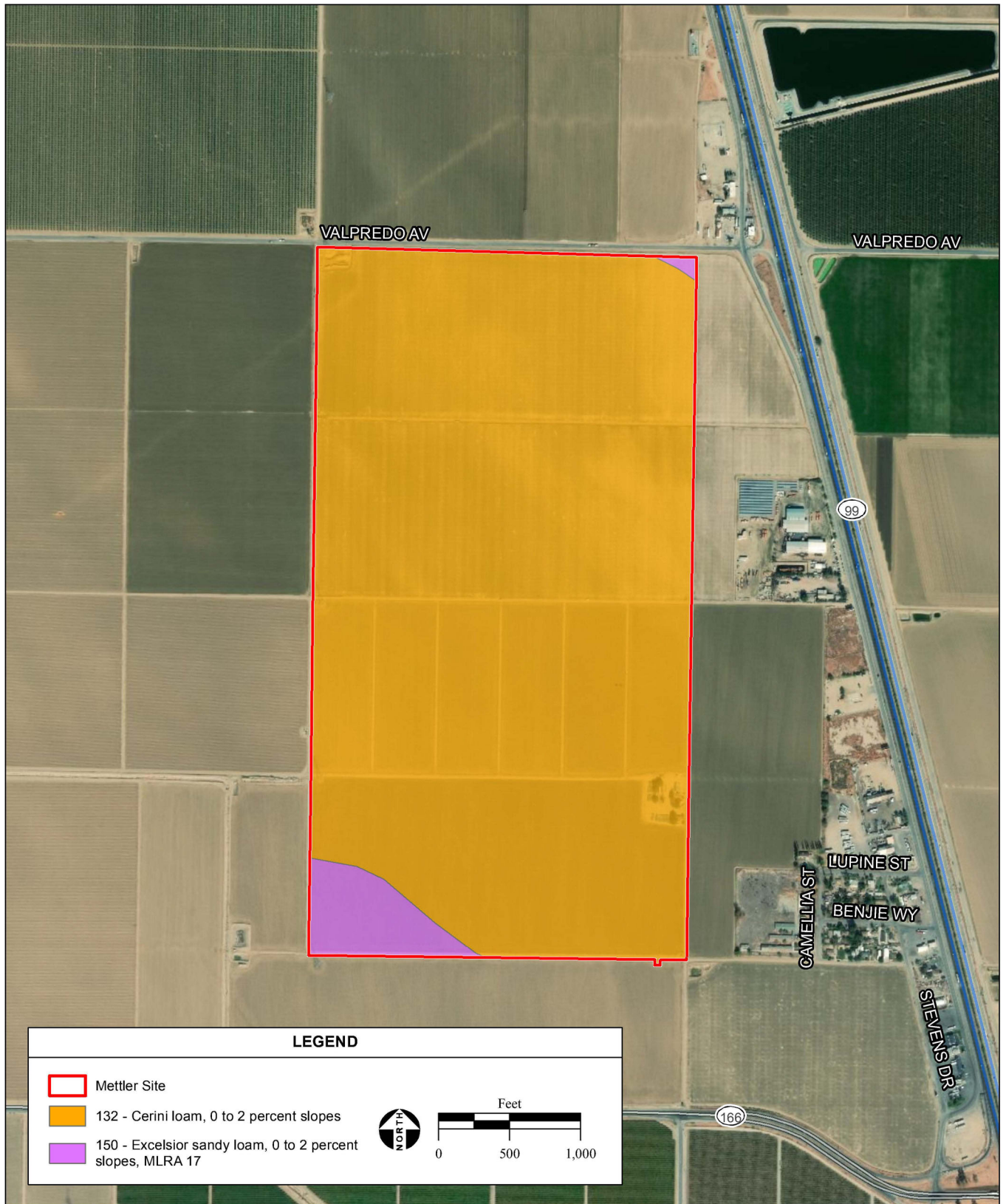
SOURCE: Dexter Wilson Engineering 4/2019, Friedmutter Group, 11/2018; DigitalGlobe aerial photograph, 11/1/2017; AES, 8/14/2019

Tejon Indian Tribe Trust Acquisition and Casino EIS / 215514 ■

**Figure 2-15**

Alternative B + Cumulative Buildout - Water/Wastewater Facilities

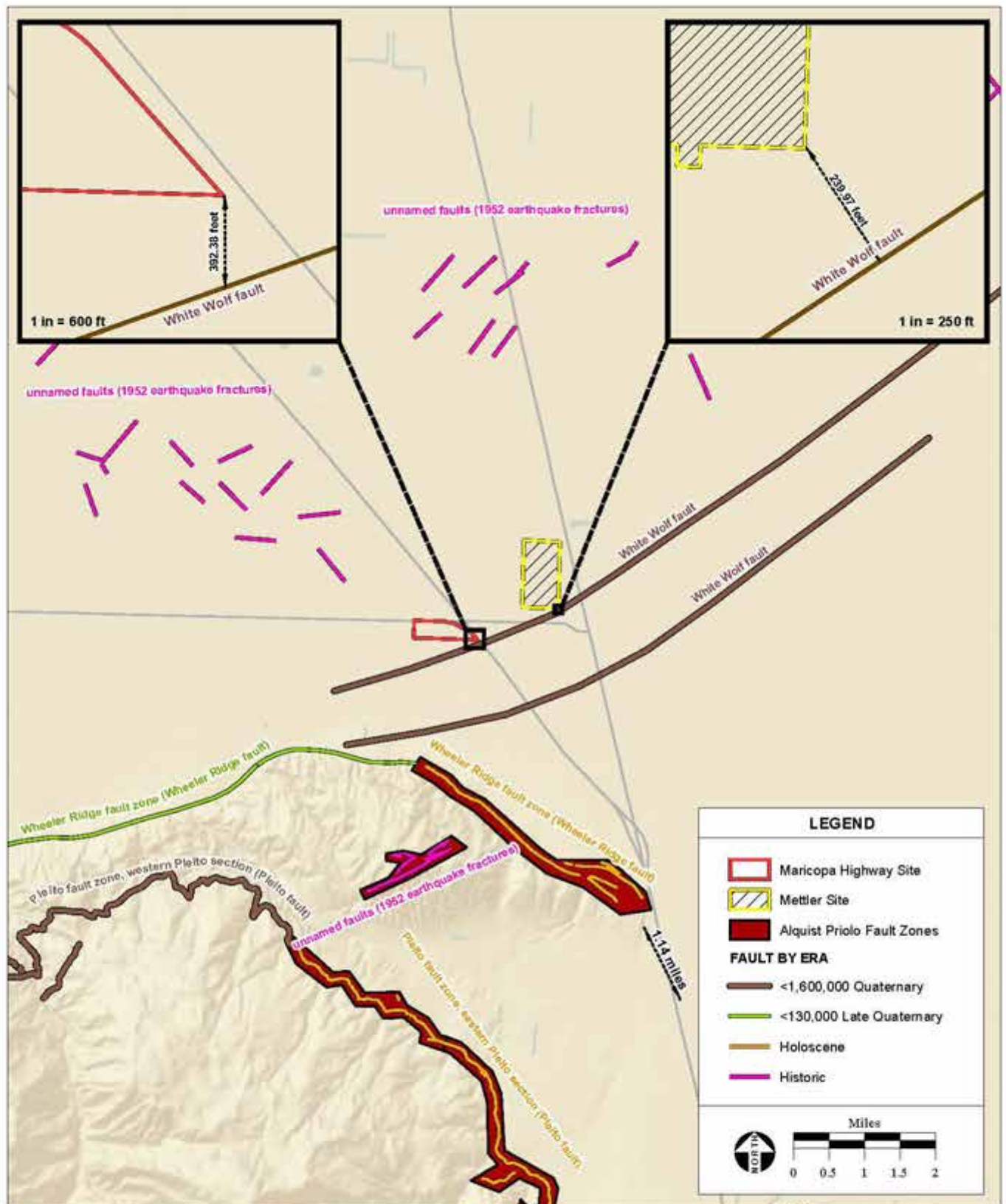




SOURCE: USDA NRCS Soil Surveys of Kern County, 2013/2017;  
DigitalGlobe aerial photograph, 7/2017; AES, 9/17/2018

Tejon Indian Tribe Trust Acquisition and Casino EIS / 215514 ■

**Figure 3.2-1**  
Mettler Site Soils

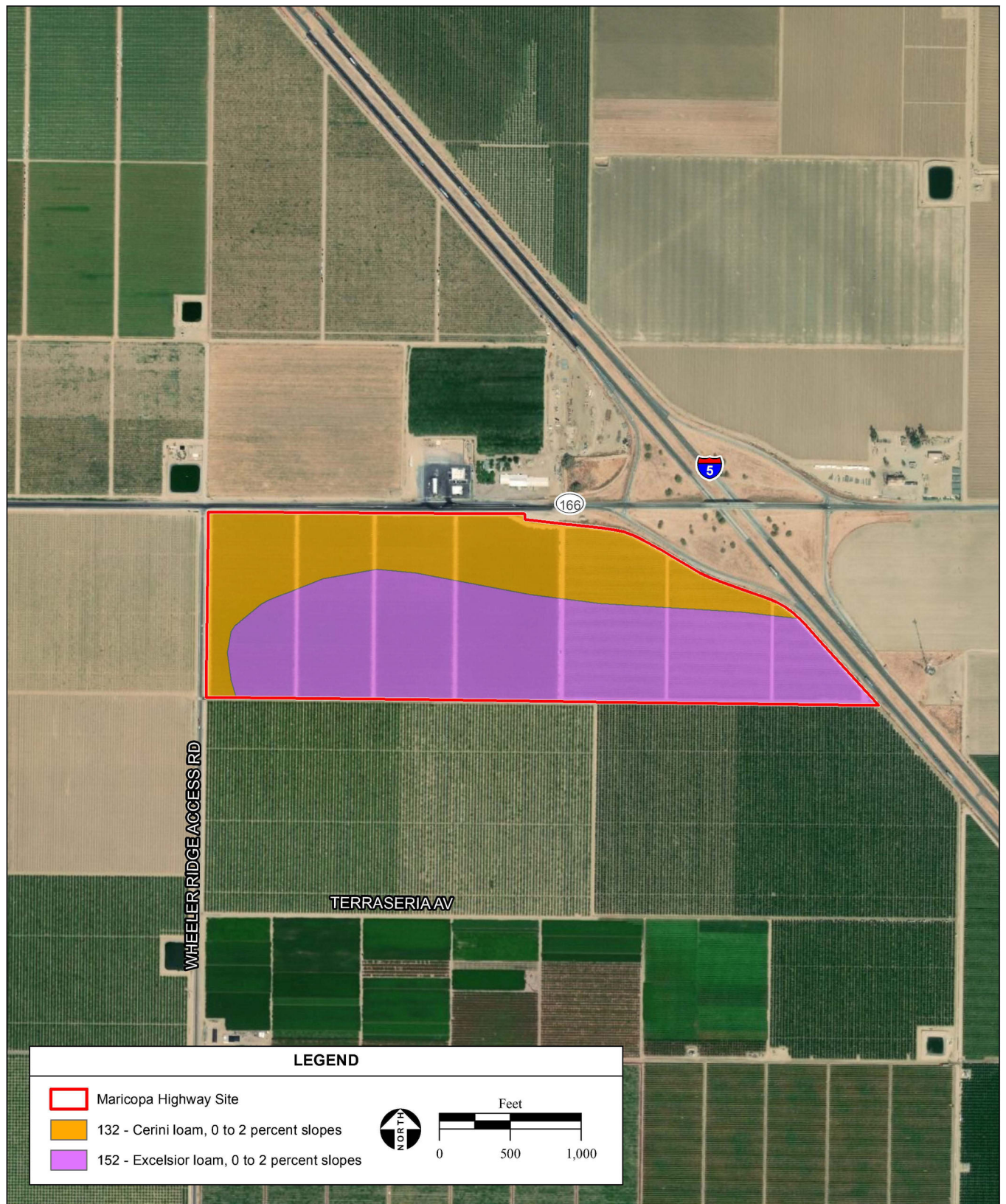


SOURCE: California Geologic Survey "Fault Activity Map of California", 2010;  
USGS Earthquake Hazards Program, 2010; AES, 9/16/2020

Tejon Indian Tribe Trust Acquisition and Casino EIS / 215514 ■

**Figure 3.2-2**  
Mettler and Maricopa Highway Sites Nearby Fault Lines (Revised)



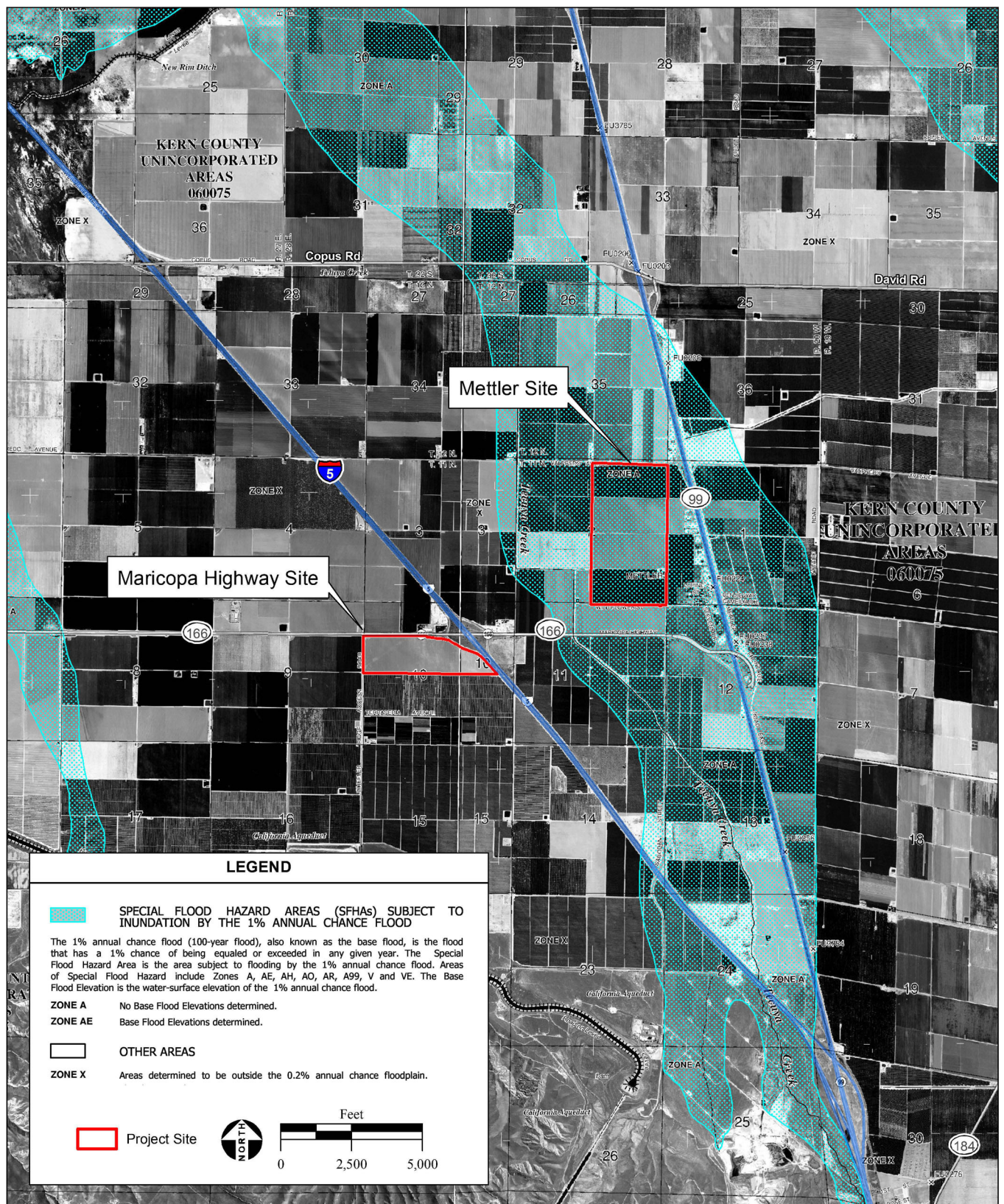


SOURCE: USDA NRCS Soil Surveys of Kern County, 2013/2017;  
DigitalGlobe aerial photograph, 7/2017; AES, 6/3/2019

Tejon Indian Tribe Trust Acquisition and Casino EIS / 215514 ■

**Figure 3.2-3**  
Maricopa Highway Site Soils





SOURCE: FEMA FIRM updated effective, 9/26/2008; AES, 9/20/2018

Tejon Indian Tribe Trust Acquisition and Casino EIS / 215514 ■

**Figure 3.3-1**  
Mettler and Maricopa Highway Site FEMA Flood Zones





SOURCE: DigitalGlobe aerial photograph, 11/1/2017; Kern County Data, 2010; AES, 5/21/2019

Tejon Indian Tribe Trust Acquisition and Casino EIS / 215514 ■

**Figure 3.5-1**  
Mettler Site Habitat Types



**PHOTO 1:** View of ruderal/disturbed habitat and agricultural row crop facing west.



**PHOTO 2:** View of drainage ditch and agricultural row crop along western boundary of the project site facing north.



**PHOTO 3:** View of disturbed/developed habitat showing rural residence and agricultural structures facing north

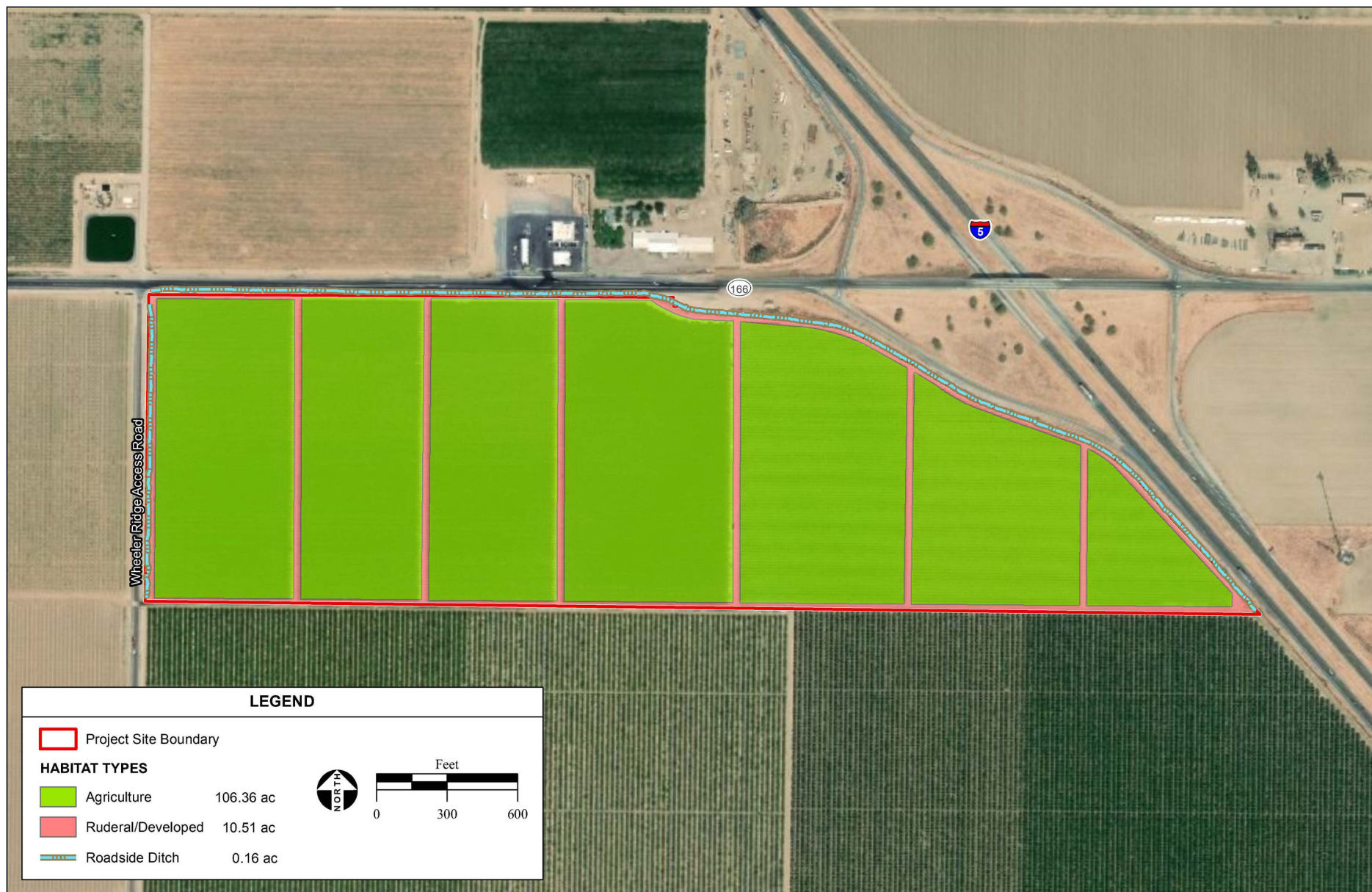


**PHOTO 4:** View of manmade agricultural ponds facing east.



**PHOTO 5:** View of manmade agricultural ponds facing south.





SOURCE: DigitalGlobe aerial photograph, 7/2017; AES, 5/16/2019

Tejon Indian Tribe Trust Acquisition and Casino EIS / 215514 ■

**Figure 3.5-3**  
Maricopa Highway Site Habitat Types





**PHOTO 1:** View of drainage ditch, access road and agricultural vine rows along SR-166. Photograph taken from the northwestern corner of the project site facing east.



**PHOTO 2:** View of access road and agricultural vine rows. Photograph taken from the north western corner of the project site facing south.



**PHOTO 3:** View of drainage ditch and access road along the north central boundary of the project site facing east.



**PHOTO 4:** View of agricultural vine rows and ruderal/disturbed habitat.

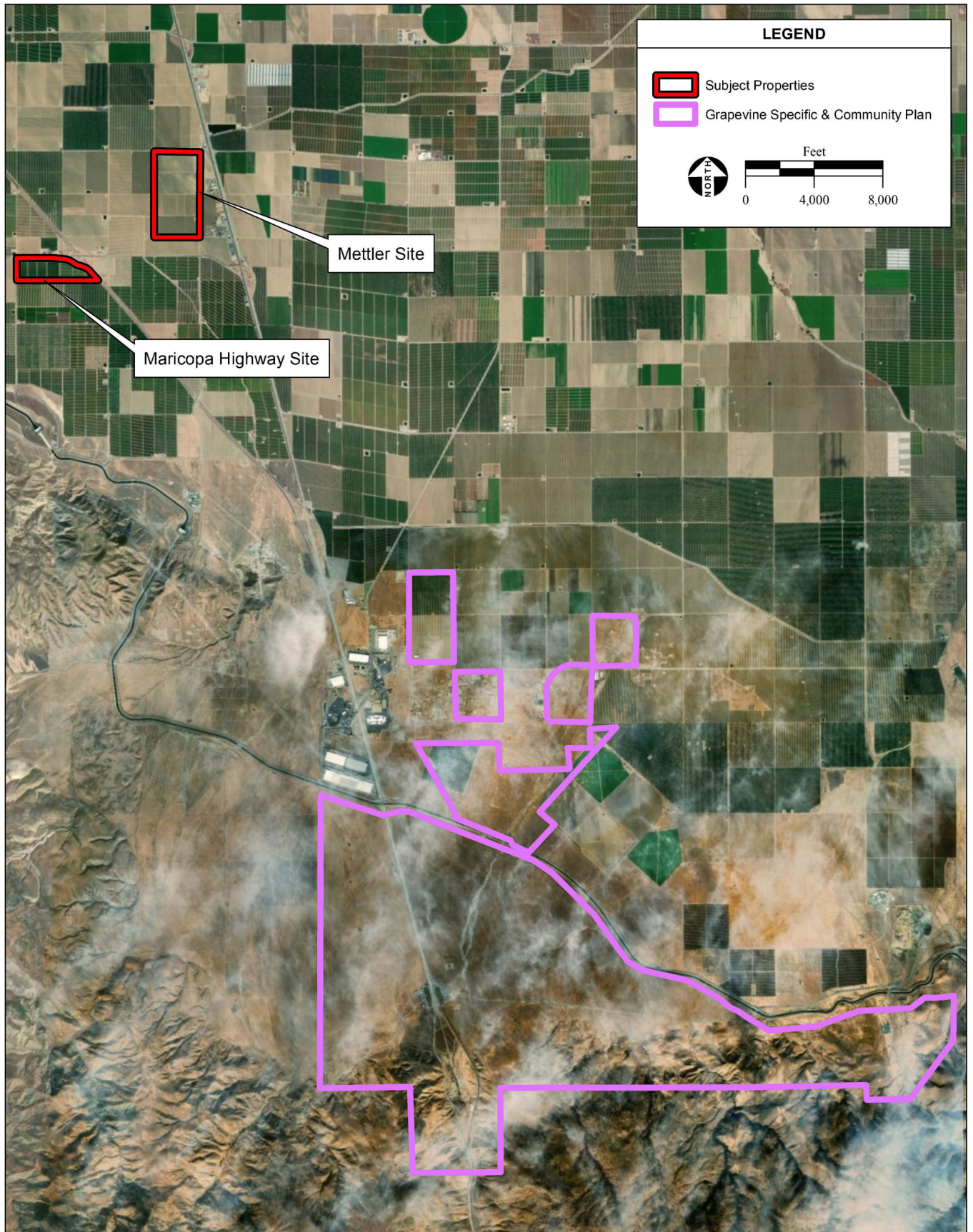


**PHOTO 5:** View of drainage ditch and access road along Wheeler Ridge Access Road facing north.



**Figure 3.7-1**  
Census Tract Map - Maricopa Highway and Mettler Sites (Revised)



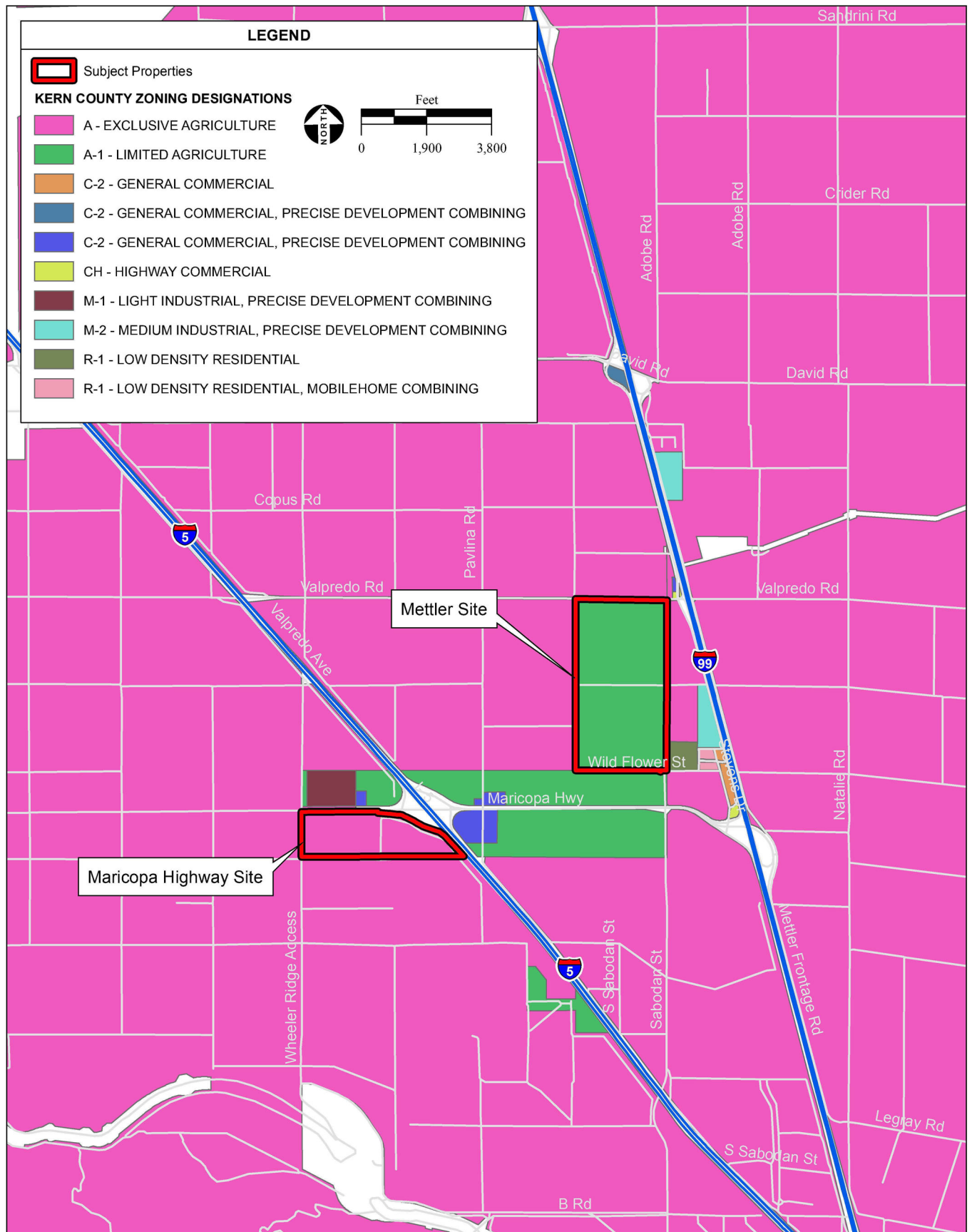


SOURCE: Kern County Planning and Natural Resources Dept, 4/2019;  
DigitalGlobe Aerial Photograph, 11/3/2017; AES, 5/31/2019

Tejon Indian Tribe Trust Acquisition and Casino EIS / 215514 ■

**Figure 3.9-1**  
Grapevine Specific and Community Plan



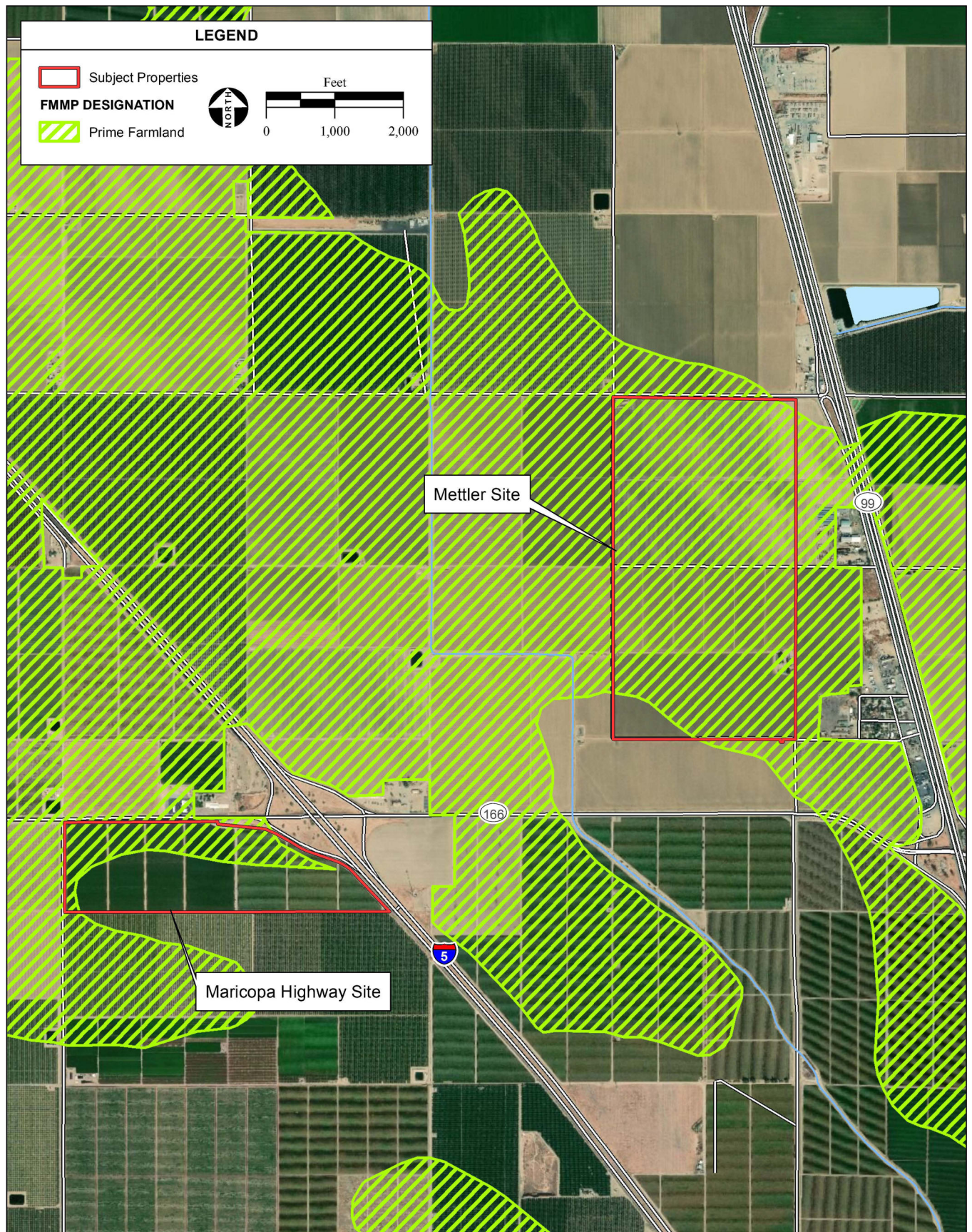


SOURCE: Kern County Planning and Community Development Department, 3/2013;  
AES, 5/31/2019

Tejon Indian Tribe Trust Acquisition and Casino EIS / 215514 ■

**Figure 3.9-2**  
Zoning Designations





SOURCE: CA Dept. of Conservation, FMMP Kern County 2010;  
DigitalGlobe Aerial Photograph, 8/8/2016; AES, 5/31/2019

Tejon Indian Tribe Trust Acquisition and Casino EIS / 215514 ■

**Figure 3.9-4**  
Prime Farmland Designations





**PHOTO 1:** View of the Mettler Site from the northwest corner facing southeast.



**PHOTO 3:** View of the Mettler Site from the southeast corner facing north.



**PHOTO 5:** View of the Mettler Site from SR-99.



**PHOTO 2:** View of the Mettler Site from the southeast corner facing west.



**PHOTO 4:** View of the Mettler Site from SR-166.



**PHOTO 1:** View of drainage ditch, access road and agricultural vine rows along SR-166. Photograph taken from the northwestern corner of the project site facing east.



**PHOTO 2:** View of access road and agricultural vine rows. Photograph taken from the north western corner of the project site facing south.



**PHOTO 3:** View of drainage ditch and access road along the north central boundary of the project site facing east.

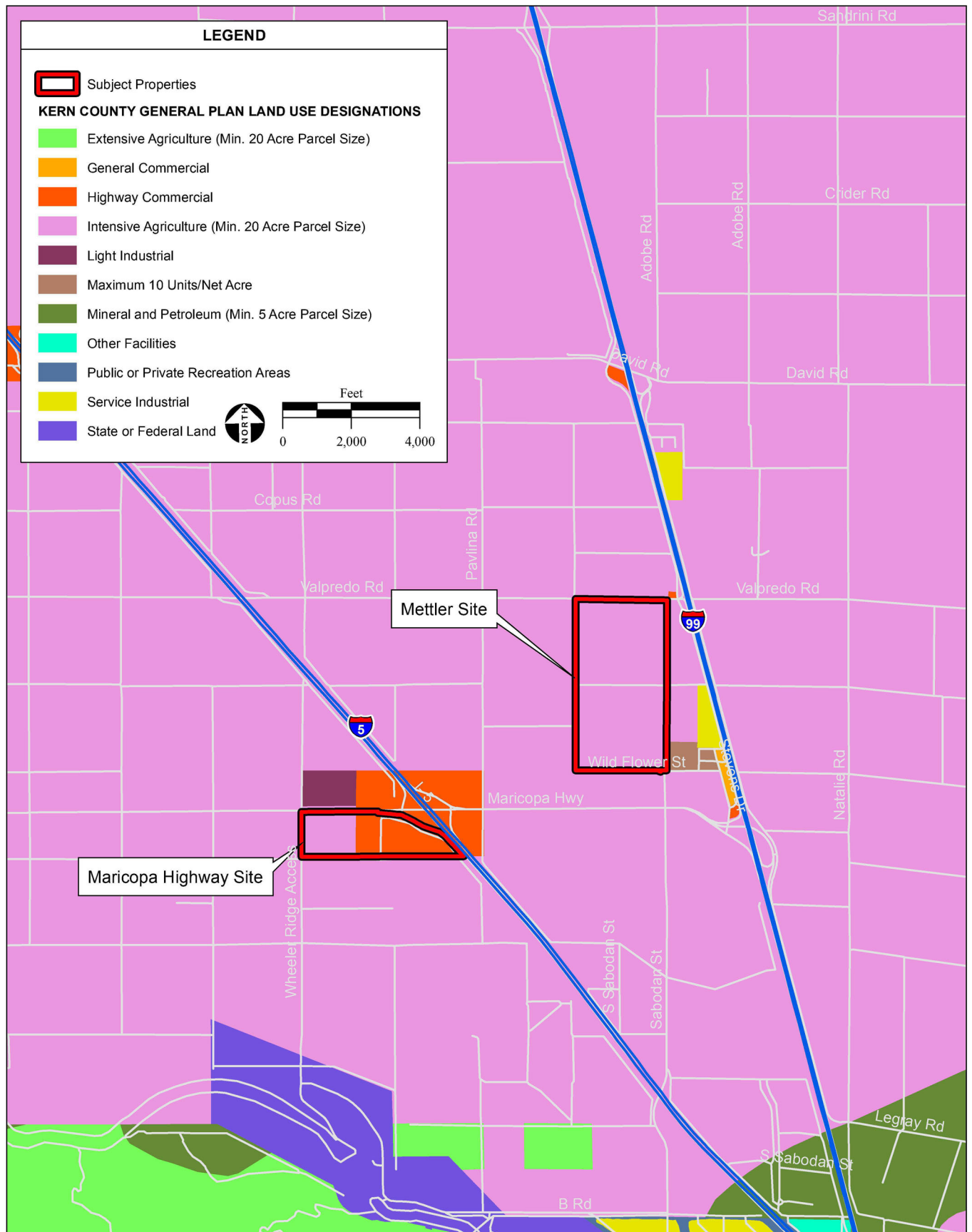


**PHOTO 4:** View of agricultural vine rows and ruderal/disturbed habitat.



**PHOTO 5:** View of drainage ditch and access road along Wheeler Ridge Access Rd facing north.

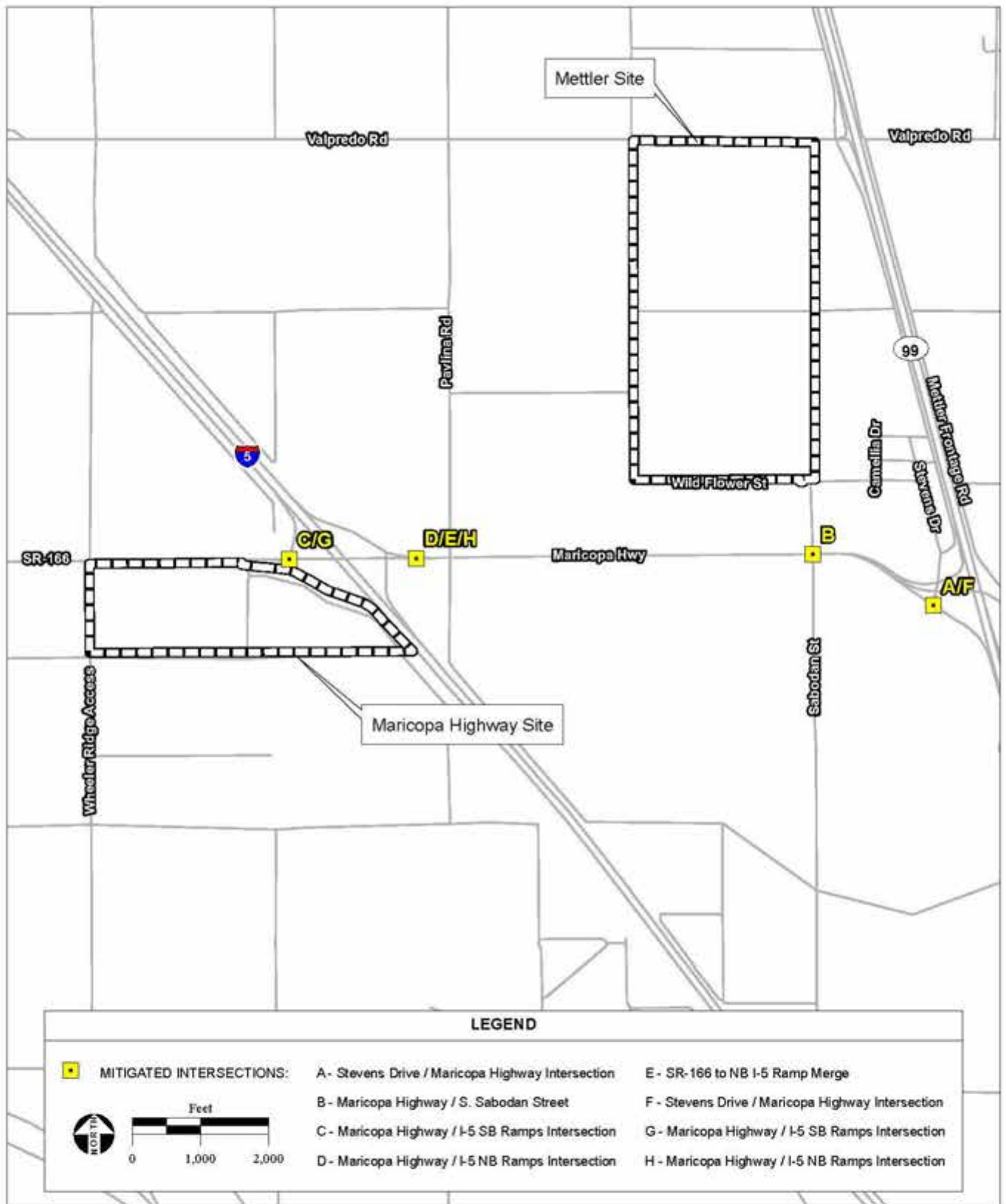




SOURCE: Kern County General Plan, Planning and Community Development Department, 3/2013; AES, 5/31/2019

Tejon Indian Tribe Trust Acquisition and Casino EIS / 215514 ■

**Figure 3.9-3**  
Land Use Designations



SOURCE: Linscott Law & Greenspan, 5/23/19; Caltrans California Road Study Maps, 2019; AES, 7/31/2019

Tejon Indian Tribe Trust Acquisition and Casino EIS / 215514 ■

**Figure 4-1**  
Location of Mitigation Measures for Alternatives A1, A2, and B